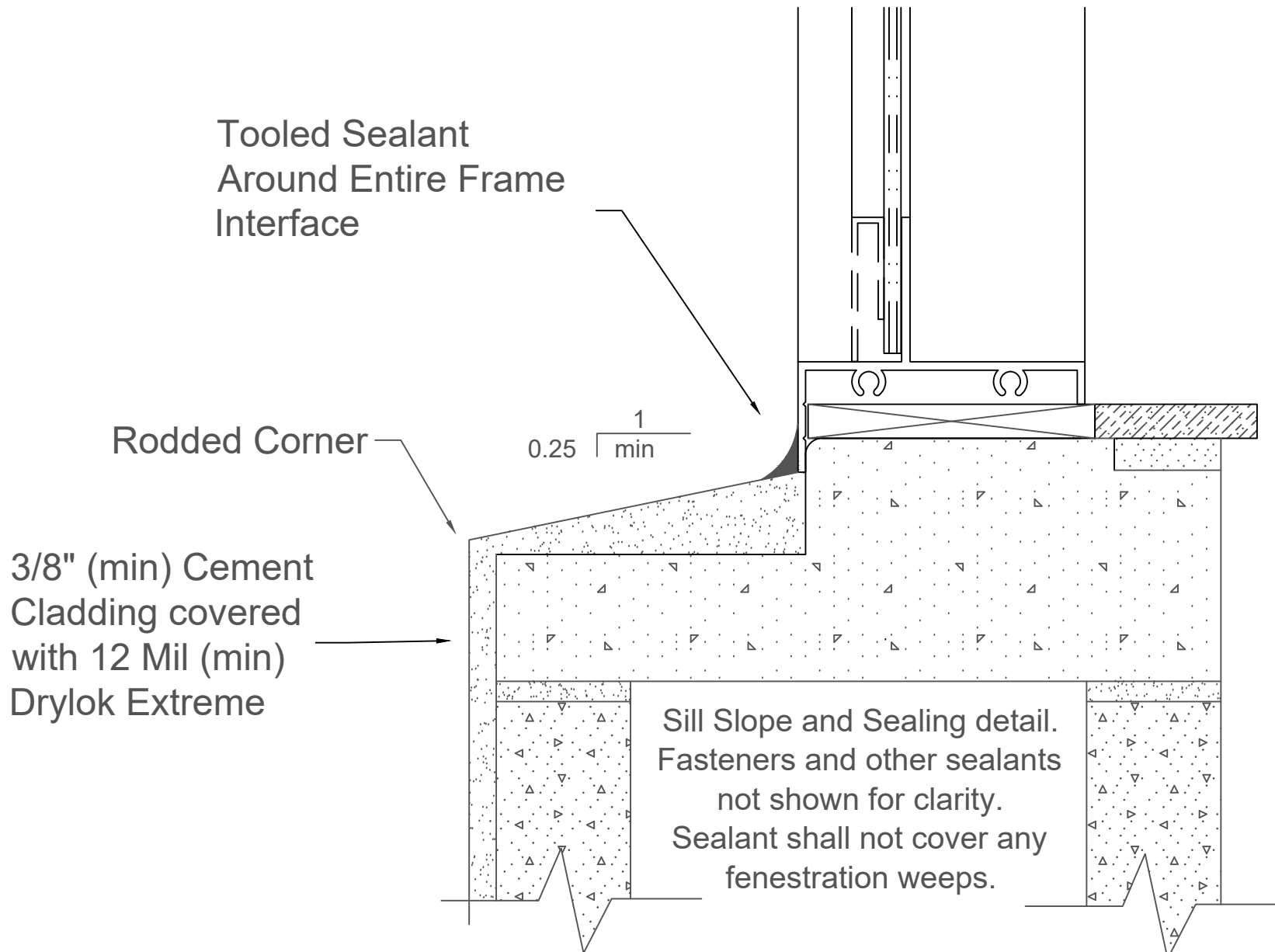


SILL SLOPE REQUIREMENTS



For finished precast sills that have a nosing and finished slope - follow manufacturer instructions. Do not stucco top of smooth finished sills.

Note:
Details to be used in conjunction with all applicable provisions contained in the Sealed Cladding System Design Manual.

Sealed Cladding System

07/01/2020

SCS 06 _06