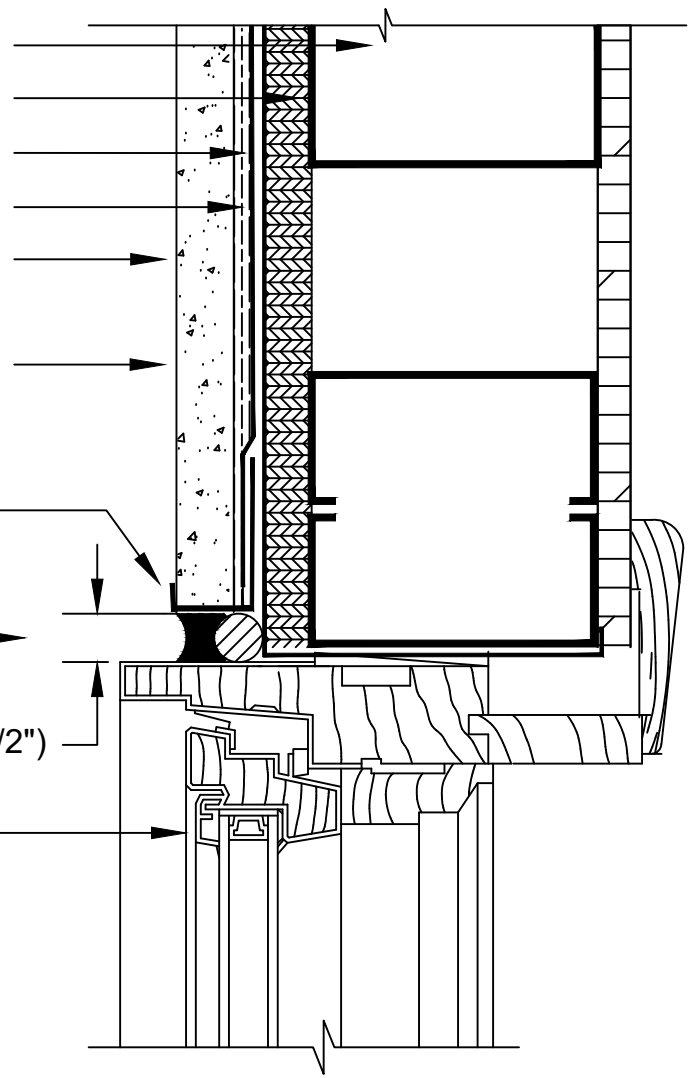
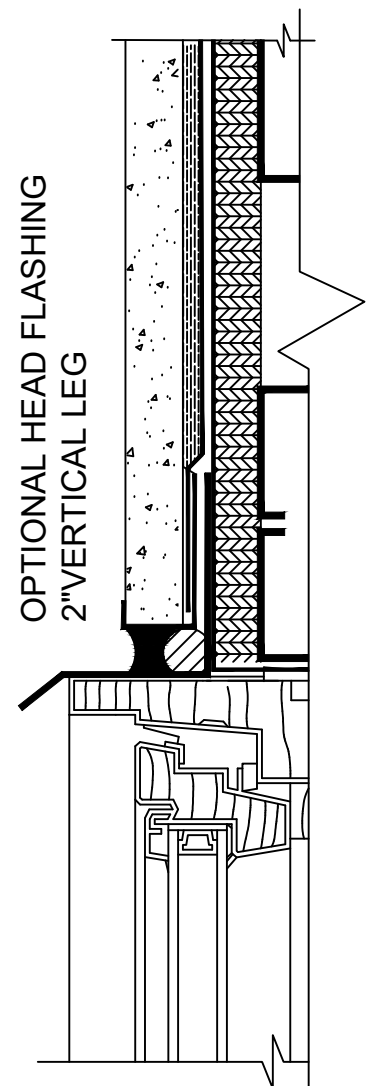


FRAMING
 APPROVED SHEATHING
 TYPAR HOUSEWRAP
 STRUCTALATH TWIN TRAC 2.5
 3/4" CEMENT CLADDING
 12 MIL (min) DRYLOK EXTREME
 3/4" CASING BEAD
 1/2" BACKER ROD
 AND TOOLED SEALANT
 MIN. 13 mm (1/2")
 CLAD WINDOW



JAMB INTERFACE



HEAD INTERFACE

SCS 06_03 JAMB INTERFACE WITH CASING STOP

Note:
 Details to be used in conjunction with all applicable provisions contained in the Sealed Cladding System Design Manual.

Sealed Cladding System

07/01/2020

SCS 06_03