

NOTE:  
FLASHING MEMBRANE  
TO BE INSTALLED  
BEHIND FASCIA THAT  
ABUTS WALL.

FLASHING MEMBRANE

PLASTIC CEMENT  
BEHIND BOTH  
VERTICAL AND HORIZONTAL  
FLANGES - NOT SHOWN

TOOLED SEALANT

"V" GROOVE WITH  
TOOLED SEALANT

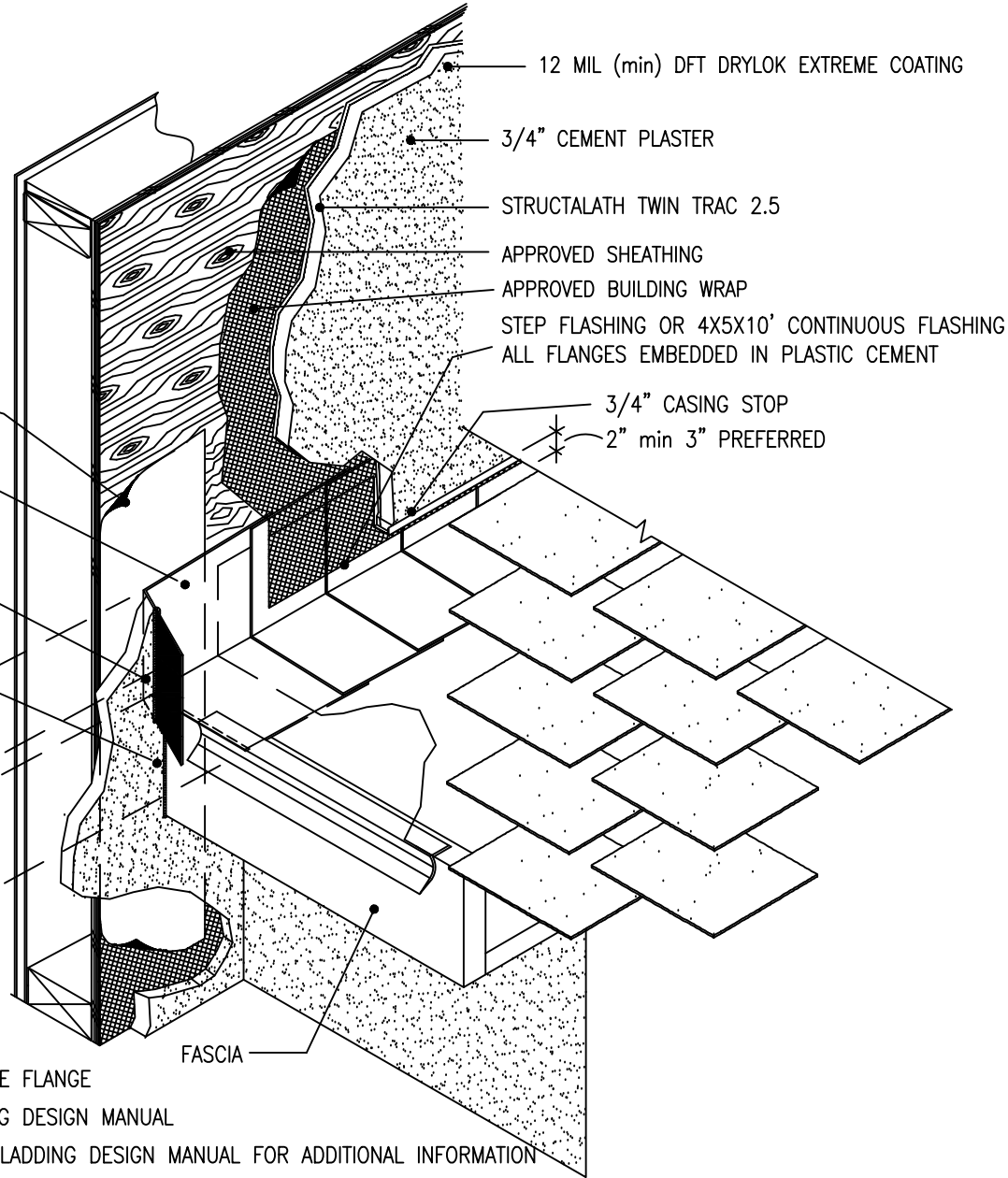
KICKOUT

FIELD FOLDED W/TONGS

TO HOOK OVER EAVE DRIP NOSE FLANGE

REFER TO THE SEALED CLADDING DESIGN MANUAL

SEE SCS 01\_01 AND SEALED CLADDING DESIGN MANUAL FOR ADDITIONAL INFORMATION



Note:  
Details to be used in conjunction with all  
applicable provisions contained in the  
Sealed Cladding System Design Manual.

Sealed Cladding System

07/01/2020

SCS 01\_02

SCS 01\_02 ROOF KICKOUT INTERFACE